



TRUEHEAT B60 & B90

COMMERCIAL ALL PURPOSE GAS BARBEQUE

The B60 and B90 series is a gas heated, heavy duty barbeque mounted on a stand with fully adjustable shelf. Heavy duty cast iron radiant hoods over powerful gas burners radiate heat to the grates, which seal in the natural flavours and leave a unique 'chargrill' appearance on steaks, chicken, seafood and vegetable.



STANDARD FEATURES

- Heavy duty 304 stainless steel front, sides and backguard
- Cast iron Radiant hoods and grates
- 100% flame failure to all burners
- Piezo ignition
- Full width grease drip tray
- Reversible grates for angled or flat operation
- B60 - 68mj burners, B90 - 102mj burners
- Stand with under shelf included and adjustable legs
- Individual burner controls for cooking versatility
- AGA approved

SPECIFICATIONS ARE SUBJECT TO CHANGE WITHOUT NOTICE.

From the world of Comcater!

National Head Office
156 Swann Drive
Derrimut VIC 3030
Tel: +61 3 8369 4600
Fax: +61 3 8369 4695

Melbourne
96-100 Tope Street,
South Melbourne VIC 3205
Tel: +61 3 8369 4600
Fax: +61 2 8699 1299

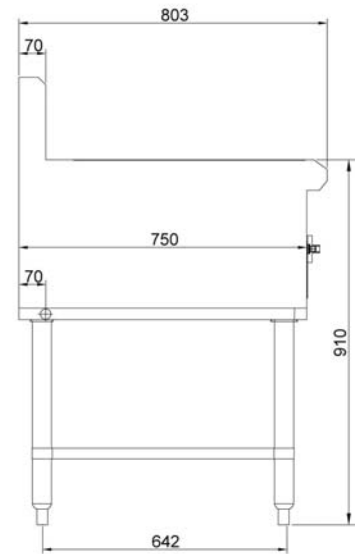
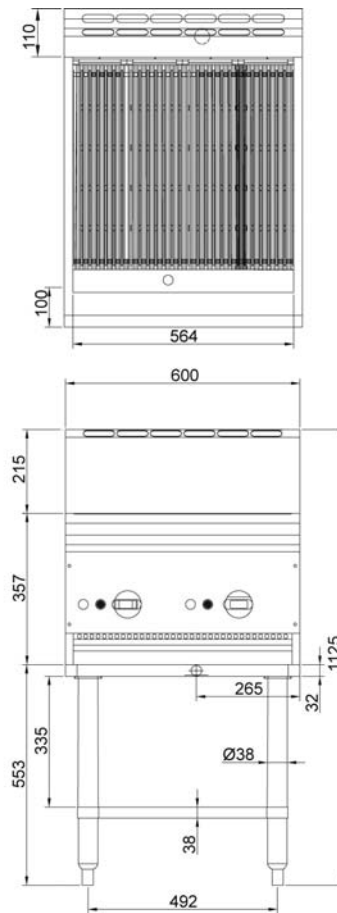
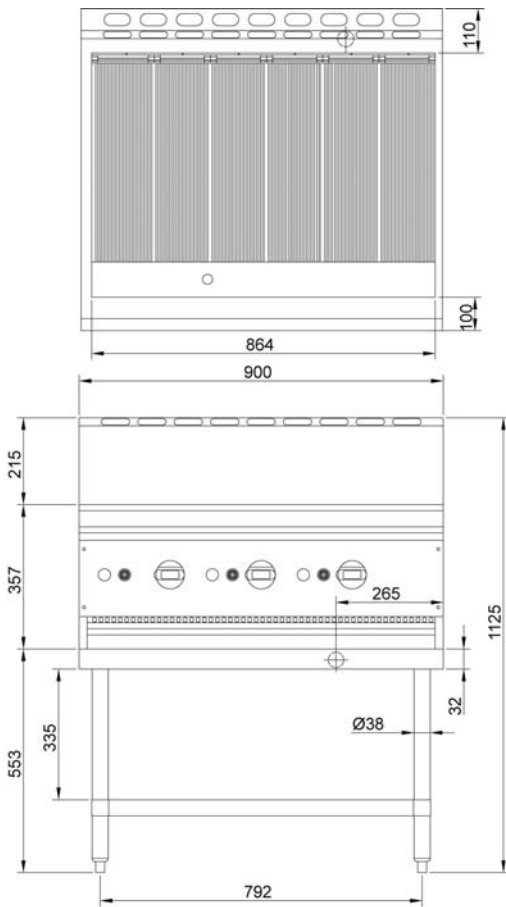
Sydney
20/4 Avenue of the Americas
Newington, NSW 2127
Tel: +61 2 9748 3000
Fax: +61 2 9 648 4762

Brisbane
1/62 Borthwick Avenue
Murarrie QLD 4172
Tel: +61 7 3399 3122
Fax: +61 7 3399 5311

www.comcater.com.au

COMCATER
- foodservice equipment

TRUEHEAT B60 & B90



DIMENSIONS

B60 - 600W x 803D x 1125H mm

B90 - 900W x 803D x 1125H mm

TECHNICAL DATA

Gas Type	Natural or LP
Power Output	B60 2 burners (total 68mj) B90 3 burners (total 102mj)
Gas Connection	3/4"
AGA Approval No.	6868

ACCESSORIES

- Drop-in 275mm Flat Grill Plate
- Castors

SPECIFICATIONS ARE SUBJECT TO CHANGE WITHOUT NOTICE.



www.comcater.com.au

PROUDLY DISTRIBUTED BY: